

GN 113.9 | Quick release pins

Stainless steel



- 1
- 2
- 3
- 4
- 5
- 6
- 7
- 8
- 9
- 10
- 11
- 12
- 13
- 14
- 15
- 16
- 17
- 18

PIN
AISI 303 stainless steel.

BALLS
AISI 420C stainless steel.

SPRING
Stainless steel.

ROUND HANDLE AND PUSH BUTTON
AISI 316L stainless steel.

MAX. WORKING TEMPERATURE
175°C.

FEATURES AND APPLICATIONS
GN 113.9 quick release pins are generally used for quick fastenings between components or parts being machined, particularly when they must be frequently repositioned.

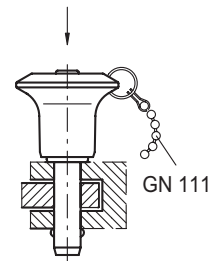
ACCESSORIES ON REQUEST
To optimise the use of these ball lock pins, have been designed:
- GN 111: ball chains (see page 816);
- GN 111.2: retaining cables (see page 817);
- GN 111.4: spiral retaining cables (see page 818).

SPECIAL EXECUTIONS ON REQUEST
Other dimensions.

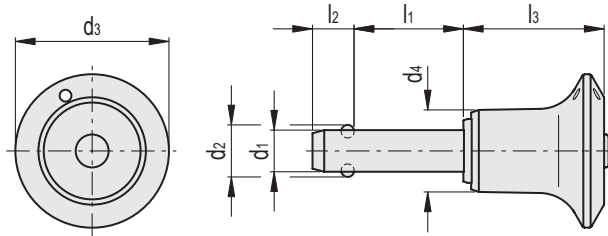
INSTRUCTIONS OF USE
Insert the quick release pin into the hole of the two parts to be locked, holding down the button that releases the two balls. To unlock the two parts, press the button which releases the balls and allows the quick release pin to be removed.



Application example




Conversion Table	
1 mm = 0.039 inch	
d1	
mm	inch
5	0.20
6	0.24
8	0.31
10	0.39
12	0.47



Code	Description	d1 -0.04 -0.08	d2	d3	d4	l1 +0.6	l2 ±1	l3 -0.2	Mounting hole H11	Double sided shearing force [kN]	⚖
GN.13171	GN 113.9-5-10	5	5.5	23	10.2	10	6.2	20.2	5	14	23
GN.13172	GN 113.9-5-15	5	5.5	23	10.2	15	6.2	20.2	5	14	24
GN.13173	GN 113.9-5-20	5	5.5	23	10.2	20	6.2	20.2	5	14	24
GN.13174	GN 113.9-5-25	5	5.5	23	10.2	25	6.2	20.2	5	14	25
GN.13175	GN 113.9-5-30	5	5.5	23	10.2	30	6.2	20.2	5	14	26
GN.13176	GN 113.9-5-35	5	5.5	23	10.2	35	6.2	20.2	5	14	26
GN.13177	GN 113.9-5-40	5	5.5	23	10.2	40	6.2	20.2	5	14	27
GN.13178	GN 113.9-5-45	5	5.5	23	10.2	45	6.2	20.2	5	14	28
GN.13179	GN 113.9-5-50	5	5.5	23	10.2	50	6.2	20.2	5	14	28
GN.13180	GN 113.9-5-60	5	5.5	23	10.2	60	6.2	20.2	5	14	31
GN.13181	GN 113.9-5-70	5	5.5	23	10.2	70	6.2	20.2	5	14	32
GN.13182	GN 113.9-5-80	5	5.5	23	10.2	80	6.2	20.2	5	14	33

Indexing and positioning elements

INOX STAINLESS
STEEL METRIC

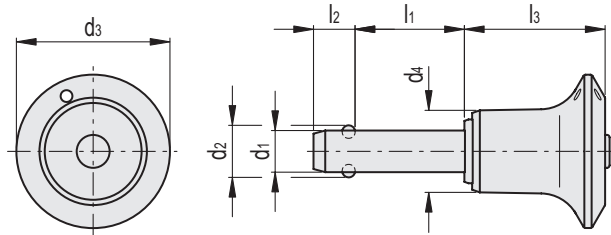
Code	Description	d1-0.04-0.08	d2	d3	d4	l1+0.6	l2±1	l3-0.2	Mounting hole H11	Double sided shearing force [KN]	
GN.13191	GN 113.9-6-10	6	7	23	10.2	10	7.2	20.2	6	21	25
GN.13192	GN 113.9-6-15	6	7	23	10.2	15	7.2	20.2	6	21	25
GN.13193	GN 113.9-6-20	6	7	23	10.2	20	7.2	20.2	6	21	26
GN.13194	GN 113.9-6-25	6	7	23	10.2	25	7.2	20.2	6	21	27
GN.13195	GN 113.9-6-30	6	7	23	10.2	30	7.2	20.2	6	21	29
GN.13196	GN 113.9-6-35	6	7	23	10.2	35	7.2	20.2	6	21	29
GN.13197	GN 113.9-6-40	6	7	23	10.2	40	7.2	20.2	6	21	30
GN.13198	GN 113.9-6-45	6	7	23	10.2	45	7.2	20.2	6	21	31
GN.13199	GN 113.9-6-50	6	7	23	10.2	50	7.2	20.2	6	21	32
GN.13200	GN 113.9-6-60	6	7	23	10.2	60	7.2	20.2	6	21	34
GN.13201	GN 113.9-6-70	6	7	23	10.2	70	7.2	20.2	6	21	36
GN.13202	GN 113.9-6-80	6	7	23	10.2	80	7.2	20.2	6	21	38
GN.13211	GN 113.9-8-10	8	9.5	27	13.2	10	8.4	26.8	8	38	43
GN.13212	GN 113.9-8-15	8	9.5	27	13.2	15	8.4	26.8	8	38	45
GN.13213	GN 113.9-8-20	8	9.5	27	13.2	20	8.4	26.8	8	38	47
GN.13214	GN 113.9-8-25	8	9.5	27	13.2	25	8.4	26.8	8	38	49
GN.13215	GN 113.9-8-30	8	9.5	27	13.2	30	8.4	26.8	8	38	50
GN.13216	GN 113.9-8-35	8	9.5	27	13.2	35	8.4	26.8	8	38	52
GN.13217	GN 113.9-8-40	8	9.5	27	13.2	40	8.4	26.8	8	38	55
GN.13218	GN 113.9-8-45	8	9.5	27	13.2	45	8.4	26.8	8	38	57
GN.13219	GN 113.9-8-50	8	9.5	27	13.2	50	8.4	26.8	8	38	56
GN.13220	GN 113.9-8-60	8	9.5	27	13.2	60	8.4	26.8	8	38	62
GN.13221	GN 113.9-8-70	8	9.5	27	13.2	70	8.4	26.8	8	38	66
GN.13222	GN 113.9-8-80	8	9.5	27	13.2	80	8.4	26.8	8	38	69
GN.13223	GN 113.9-8-90	8	9.5	27	13.2	90	8.4	26.8	8	38	73
GN.13224	GN 113.9-8-100	8	9.5	27	13.2	100	8.4	26.8	8	38	77
GN.13231	GN 113.9-10-15	10	12	27	13.2	15	9.9	26.8	10	60	51
GN.13232	GN 113.9-10-20	10	12	27	13.2	20	9.9	26.8	10	60	53
GN.13233	GN 113.9-10-25	10	12	27	13.2	25	9.9	26.8	10	60	57
GN.13234	GN 113.9-10-30	10	12	27	13.2	30	9.9	26.8	10	60	60
GN.13235	GN 113.9-10-35	10	12	27	13.2	35	9.9	26.8	10	60	63
GN.13236	GN 113.9-10-40	10	12	27	13.2	40	9.9	26.8	10	60	65
GN.13237	GN 113.9-10-45	10	12	27	13.2	45	9.9	26.8	10	60	68
GN.13238	GN 113.9-10-50	10	12	27	13.2	50	9.9	26.8	10	60	69
GN.13239	GN 113.9-10-60	10	12	27	13.2	60	9.9	26.8	10	60	77
GN.13240	GN 113.9-10-70	10	12	27	13.2	70	9.9	26.8	10	60	83
GN.13241	GN 113.9-10-80	10	12	27	13.2	80	9.9	26.8	10	60	88
GN.13242	GN 113.9-10-90	10	12	27	13.2	90	9.9	26.8	10	60	94
GN.13243	GN 113.9-10-100	10	12	27	13.2	100	9.9	26.8	10	60	101
GN.13244	GN 113.9-10-110	10	12	27	13.2	110	9.9	26.8	10	60	107
GN.13245	GN 113.9-10-120	10	12	27	13.2	120	9.9	26.8	10	60	112
GN.13251	GN 113.9-12-20	12	14.5	31	16.4	20	10.9	32.7	12	87	83
GN.13252	GN 113.9-12-25	12	14.5	31	16.4	25	10.9	32.7	12	87	88
GN.13253	GN 113.9-12-30	12	14.5	31	16.4	30	10.9	32.7	12	87	114
GN.13254	GN 113.9-12-35	12	14.5	31	16.4	35	10.9	32.7	12	87	96
GN.13255	GN 113.9-12-40	12	14.5	31	16.4	40	10.9	32.7	12	87	110
GN.13256	GN 113.9-12-45	12	14.5	31	16.4	45	10.9	32.7	12	87	105
GN.13257	GN 113.9-12-50	12	14.5	31	16.4	50	10.9	32.7	12	87	109
GN.13258	GN 113.9-12-60	12	14.5	31	16.4	60	10.9	32.7	12	87	118
GN.13259	GN 113.9-12-70	12	14.5	31	16.4	70	10.9	32.7	12	87	104
GN.13260	GN 113.9-12-80	12	14.5	31	16.4	80	10.9	32.7	12	87	135
GN.13261	GN 113.9-12-90	12	14.5	31	16.4	90	10.9	32.7	12	87	144
GN.13262	GN 113.9-12-100	12	14.5	31	16.4	100	10.9	32.7	12	87	140
GN.13263	GN 113.9-12-110	12	14.5	31	16.4	110	10.9	32.7	12	87	153
GN.13264	GN 113.9-12-120	12	14.5	31	16.4	120	10.9	32.7	12	87	169



- 1
- 2
- 3
- 4
- 5
- 6
- 7
- 8
- 9
- 10
- 11
- 12
- 13
- 14
- 15
- 16
- 17
- 18

Conversion Table
1 mm = 0.039 inch

d1	
mm	inch
16	0.63
20	0.79
25	0.98



INOX STAINLESS STEEL **METRIC**

Code	Description	d1 -0.04 -0.08	d2	d3	d4	l1 +0.6	l2 ±1	l3 -0.2	Mounting hole H11	Double sided shearing force [kN]	
GN.13271	GN 113.9-16-30	16	19	38	23.4	30	14.5	42.6	16	155	207
GN.13272	GN 113.9-16-35	16	19	38	23.4	35	14.5	42.6	16	155	215
GN.13273	GN 113.9-16-40	16	19	38	23.4	40	14.5	42.6	16	155	223
GN.13274	GN 113.9-16-45	16	19	38	23.4	45	14.5	42.6	16	155	231
GN.13275	GN 113.9-16-50	16	19	38	23.4	50	14.5	42.6	16	155	236
GN.13276	GN 113.9-16-60	16	19	38	23.4	60	14.5	42.6	16	155	254
GN.13277	GN 113.9-16-70	16	19	38	23.4	70	14.5	42.6	16	155	270
GN.13278	GN 113.9-16-80	16	19	38	23.4	80	14.5	42.6	16	155	285
GN.13279	GN 113.9-16-90	16	19	38	23.4	90	14.5	42.6	16	155	302
GN.13280	GN 113.9-16-100	16	19	38	23.4	100	14.5	42.6	16	155	333
GN.13281	GN 113.9-16-110	16	19	38	23.4	110	14.5	42.6	16	155	317
GN.13282	GN 113.9-16-120	16	19	38	23.4	120	14.5	42.6	16	155	348
GN.13283	GN 113.9-16-130	16	19	38	23.4	130	14.5	42.6	16	155	364
GN.13284	GN 113.9-16-140	16	19	38	23.4	140	14.5	42.6	16	155	379
GN.13285	GN 113.9-16-150	16	19	38	23.4	150	14.5	42.6	16	155	396
GN.13291	GN 113.9-20-50	20	24.8	38	23.4	50	17.4	42.6	20	244	297
GN.13292	GN 113.9-20-60	20	24.8	38	23.4	60	17.4	42.6	20	244	324
GN.13293	GN 113.9-20-70	20	24.8	38	23.4	70	17.4	42.6	20	244	348
GN.13294	GN 113.9-20-80	20	24.8	38	23.4	80	17.4	42.6	20	244	372
GN.13295	GN 113.9-20-90	20	24.8	38	23.4	90	17.4	42.6	20	244	397
GN.13296	GN 113.9-20-100	20	24.8	38	23.4	100	17.4	42.6	20	244	422
GN.13297	GN 113.9-20-110	20	24.8	38	23.4	110	17.4	42.6	20	244	446
GN.13298	GN 113.9-20-120	20	24.8	38	23.4	120	17.4	42.6	20	244	471
GN.13299	GN 113.9-20-130	20	24.8	38	23.4	130	17.4	42.6	20	244	496
GN.13300	GN 113.9-20-140	20	24.8	38	23.4	140	17.4	42.6	20	244	518
GN.13301	GN 113.9-20-150	20	24.8	38	23.4	150	17.4	42.6	20	244	544
GN.13311	GN 113.9-25-50	25	30.8	50	30.4	50	22.3	54.3	25	386	551
GN.13312	GN 113.9-25-60	25	30.8	50	30.4	60	22.3	54.3	25	386	591
GN.13313	GN 113.9-25-70	25	30.8	50	30.4	70	22.3	54.3	25	386	630
GN.13314	GN 113.9-25-80	25	30.8	50	30.4	80	22.3	54.3	25	386	667
GN.13315	GN 113.9-25-90	25	30.8	50	30.4	90	22.3	54.3	25	386	705
GN.13316	GN 113.9-25-100	25	30.8	50	30.4	100	22.3	54.3	25	386	744
GN.13317	GN 113.9-25-110	25	30.8	50	30.4	110	22.3	54.3	25	386	781
GN.13318	GN 113.9-25-120	25	30.8	50	30.4	120	22.3	54.3	25	386	820
GN.13319	GN 113.9-25-130	25	30.8	50	30.4	130	22.3	54.3	25	386	858
GN.13320	GN 113.9-25-140	25	30.8	50	30.4	140	22.3	54.3	25	386	897
GN.13321	GN 113.9-25-150	25	30.8	50	30.4	150	22.3	54.3	25	386	933

Indexing and positioning elements